



UserGuide

Sample Attribute Editor

For Research Use Only.
Not for use in diagnostic procedures.

Trademarks

Affymetrix®, Axiom®, Command Console®, CopyView™, CytoScan®, DMET™, GeneAtlas®, GeneChip®, GeneChip-compatible™, GeneTitan®, Genotyping Console™, myDesign™, NetAffx®, OncoScan®, Powered by Affymetrix™, PrimeView®, Procarta®, ViewRNA®, and QuantiGene® are trademarks or registered trademarks of Affymetrix, Inc. All other trademarks are the property of their respective owners.

Limited License

Affymetrix hereby grants to buyer a non-exclusive, non-transferable, non-sublicensable license to Affymetrix' Core Product IP to use the product(s), but only in accordance with the product labels, inserts, manuals and written instructions provided by Affymetrix. "Core Product IP" is the intellectual property owned or controlled by Affymetrix as of the shipment date of a product that covers one or more features of the product that are applicable in all applications of the product that are in accordance with the product labels, inserts, manuals and written instructions provided by Affymetrix. The license granted herein to buyer to the Core Product IP expressly excludes any use that: (i) is not in accordance with the product labels, inserts, manuals and written instructions provided by Affymetrix, (ii) requires a license to intellectual property that covers one or more features of a product that are only applicable within particular fields of use or specific applications, (iii) involves reverse engineering, disassembly, or unauthorized analysis of the product and/or its methods of use, or (iv) involves the re-use of a consumable product. Buyer understands and agrees that except as expressly set forth, no right or license to any patent or other intellectual property owned or controlled by Affymetrix is granted upon purchase of any product, whether by implication, estoppel or otherwise. In particular, no right or license is conveyed or implied to use any product provided hereunder in combination with a product or service not provided, licensed or specifically recommended by Affymetrix for such use. Furthermore, buyer understands and agrees that buyer is solely responsible for determining whether buyer possesses all intellectual property rights that may be necessary for buyer's specific use of the product, including any rights from third parties.

Copyright

©2013-2015 Affymetrix Inc. All rights reserved.

Contents

Chapter 1	Sample Attribute Editor	1
	Starting the Sample Attribute Editor	1
	Adding or Removing Sample Files From the Sample Attribute Editor	2
	Adding, Editing, or Removing Attributes	2

Chapter 1

Sample Attribute Editor

The Sample Attribute Editor enables you to edit or add attributes to an existing sample file (ARR). Topics in this user manual include:

Starting the Sample Attribute Editor

Adding or Removing Sample Files From the Sample Attribute Editor on page 2

Adding, Editing, or Removing Attributes on page 2

Starting the Sample Attribute Editor

1. Select **Affymetrix** → **Sample Attribute Editor** from the Start menu.
2. Select sample files (ARR) in the dialog box that appears and click **Open**.

The Sample Attribute Editor opens and contains the selected sample files (Figure 1).

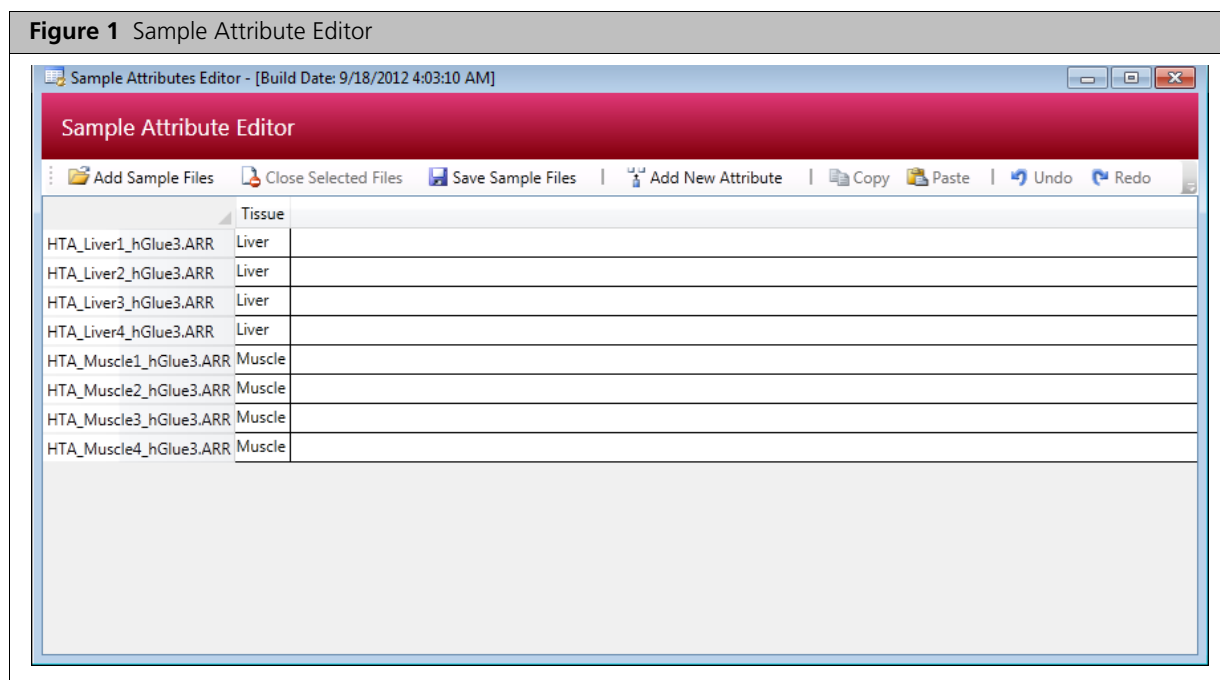
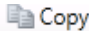


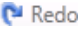


Table 1 Sample Attribute Editor Commands

Item	Description
Add Sample Files	Opens a dialog box that enables you to select sample files (ARR) to add to the Sample Attribute Editor.
Close Selected Files	Removes one or more selected ARR files from the Sample Attribute Editor.
Save Sample Files	After editing sample information, click Save Sample Files to save the changes to the ARR files.
Add New Attribute	Enables you to create a new column in the Sample Attribute Editor.

Table 1 Sample Attribute Editor Commands (Continued)

Item	Description
 Copy	Copies selected text to the system clipboard. <i>For example:</i> <ul style="list-style-type: none"> ■ Copy a cell and paste it to multiple selected cells ■ Copy multiple cells and paste to multiple cells.
 Paste	Pastes text from the system clipboard.
 Undo	Erases the previous change made in the Sample Attribute Editor (can be performed multiple times).
 Redo	Reverses the undo command (can be performed multiple times).

Adding or Removing Sample Files From the Sample Attribute Editor

To add files:

1. Click **Add Sample Files**.
2. Select a sample file(s) (ARR) from the dialog box that appears.

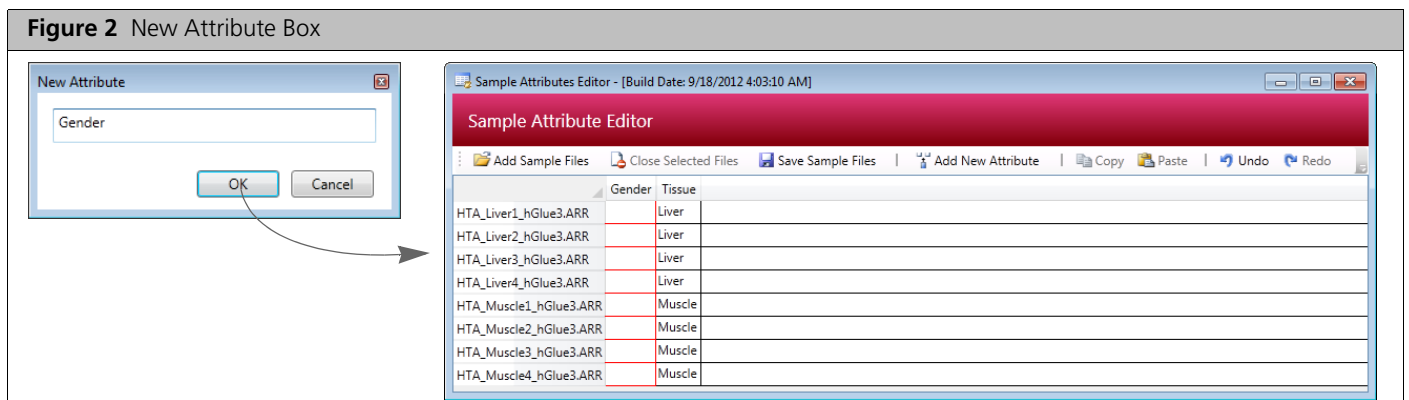
To remove files:

1. Select a file(s) in the Sample Attribute Editor.
2. Click **Close Selected Files**.

Adding, Editing, or Removing Attributes

To add a new attribute:

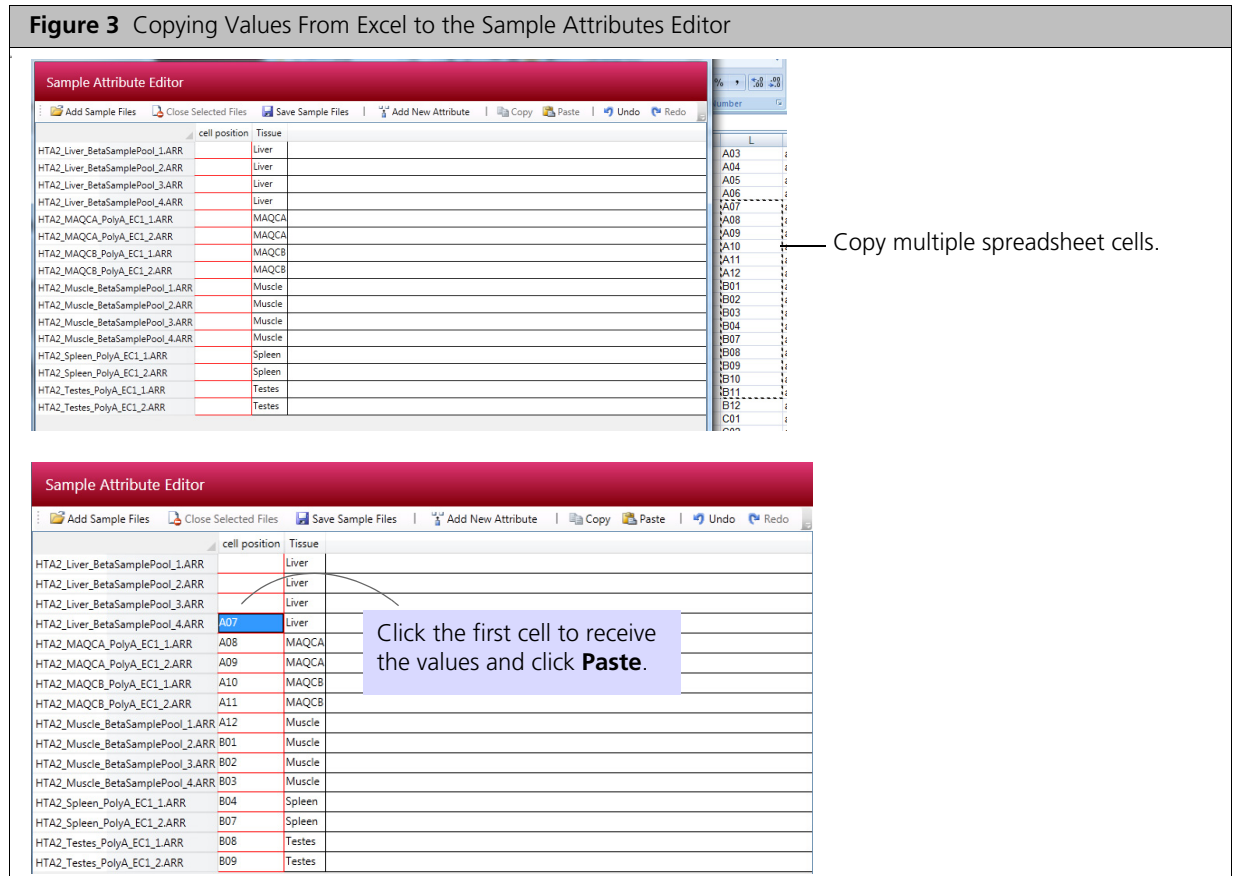
1. Click **Add New Attribute**. Alternatively, right-click an attribute column header and select **New Attribute** on the shortcut menu.
2. Enter a name for the attribute in the box that appears and click **OK**.
The attribute is added to the Sample Attribute Editor.



3. To enter attribute values:
 - A. Select one or more cells.
 - B. Enter text in the last cell in the selection and press **Enter**.
The same value is added to all of the selected cells.
4. Click **Save Sample Files**.

To copy and paste values from a spreadsheet:

1. Copy multiple cells in the spreadsheet.
2. In the Sample Attributes Editor, click the first cell to receive the values and click **Paste** (Figure 3).
3. Click **Save Sample Files**.



To edit an attribute value:

1. Double-click the cell.
2. Enter text or right-click the cell to view a shortcut menu of edit commands (Cut, Copy, Paste).

To sort attributes:

1. Click the column header
Attributes are sorted in ascending alphanumeric order.
2. Click the column header again to sort in descending alphanumeric order.

To remove an attribute:

1. Right-click the attribute column header and select **Delete Attribute** on the shortcut menu.
2. Click **Save Sample Files**.