

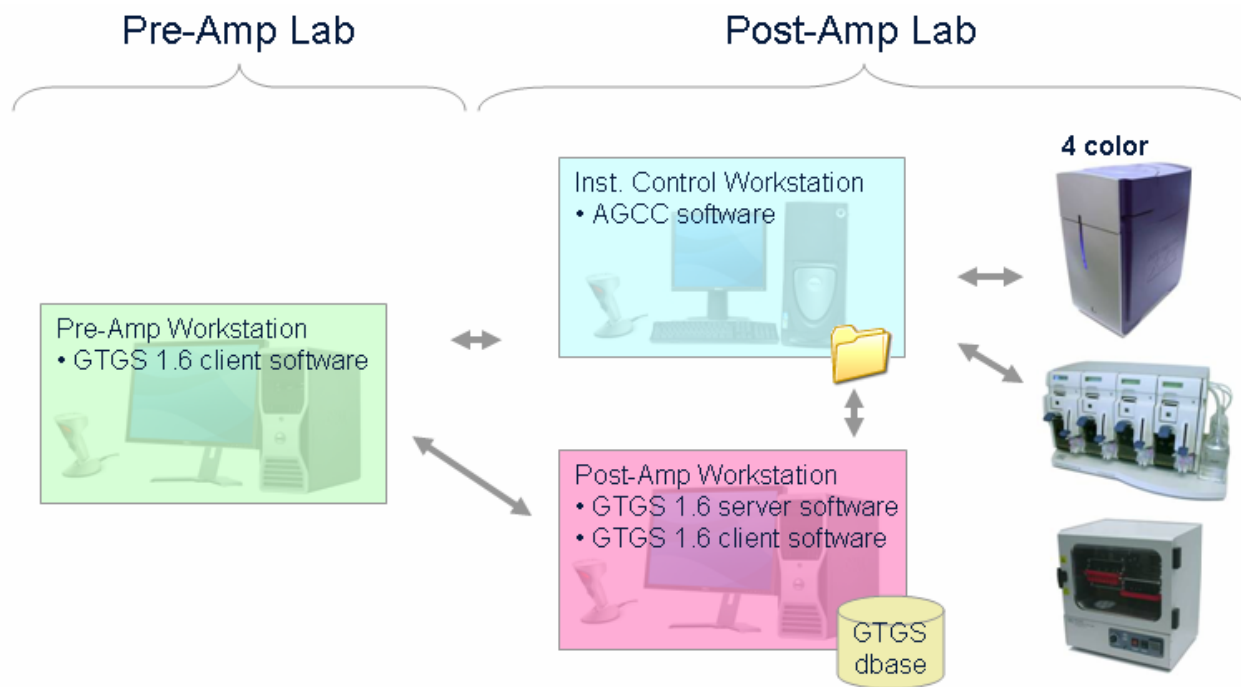
# GTGS 1.6 Installation Verification - Technical Note

This procedure verifies installation and proper configuration of Affymetrix GeneChip® Targeted Genotyping Analysis Software (GTGS) on the Pre-Amp and Post-Amp Lab Workstations, and proper communication with the AGCC Instrument Control Workstation. It is assumed that an AGCC data root folder (or subfolder) has already been shared so as to be accessible from the GTGS computers.

This procedure should also be followed to verify system integrity whenever there are network configuration or security changes to the GTGS or AGCC computers.

**NOTE:** if you wish to verify GTGS 1.6 when configured to communicate with GCOS, refer to the GTGS 1.5 Installation Verification Technical Note.

This procedure applies to the standard 3-computer configuration, each of which is connected to the local area network and has a barcode reader:



This procedure does not describe how to test all the functions of GTGS, only those that interact with the other computers of the system. It is assumed that if these major functions work, the other components of the software will also work.

**System configuration worksheet, for your records**

Who completed this worksheet \_\_\_\_\_  
Date worksheet was completed \_\_\_\_\_

AGCC Instrument Control Workstation

Computer name (on the network) \_\_\_\_\_  
Serial number \_\_\_\_\_  
AGCC version \_\_\_\_\_  
Computer Administrator name \_\_\_\_\_  
Administrator password \_\_\_\_\_

GTGS Post-Amp Lab Workstation

Computer name (on the network) \_\_\_\_\_  
Serial number \_\_\_\_\_  
GTGS version \_\_\_\_\_  
Authentication mode (NT or DB)(*DB = SQL authentication*) \_\_\_\_\_  
Computer Administrator name \_\_\_\_\_  
Administrator password \_\_\_\_\_  
SQL "SA" password \_\_\_\_\_

GTGS Pre-Amp Lab Workstation

Computer name (on the network) \_\_\_\_\_  
Serial number \_\_\_\_\_

Is the Windows Firewall on? \_\_\_\_\_

Are you using a Proxy server? \_\_\_\_\_

Antivirus policy \_\_\_\_\_

Windows updating policy \_\_\_\_\_

## GTGS Installation Verification Procedure

**NOTE:** The system is not considered verified unless you can CIRCLE “Yes” to all the checkpoints. Unless otherwise stated, do not proceed to the next checkpoint until you can answer “Yes” to the current checkpoint.

Yes No 1. Turn on the AGCC and Lab computers. If they’re already on, restart them all.

### Post-Amp Lab Workstation Verification

Yes No 2. Log into Microsoft Windows as a user on the computer’s domain (NOT Administrator on “this computer”).

Yes No 3. Is there a “GeneChip TG Software” Microsoft Internet Explorer shortcut on the Desktop?

Yes No 4. Double-click on the GeneChip TG Software shortcut. Does a web page open containing the Affymetrix logo?

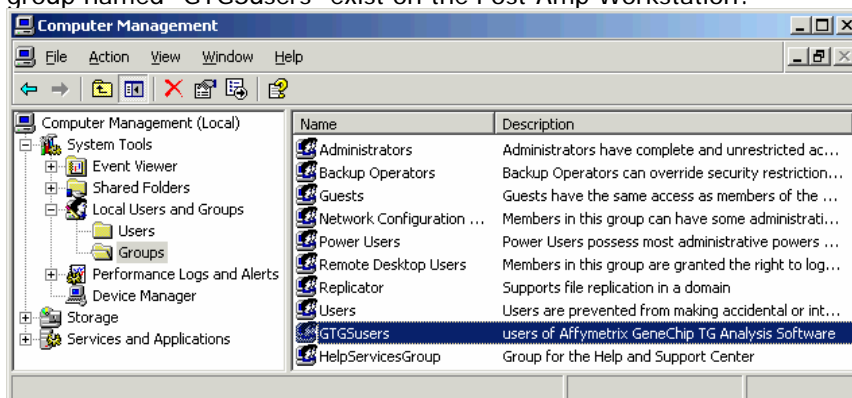
**NOTE on the following steps:** By default, GTGS is configured for “DB authentication”, which means that when GTGS launches, the user is asked to select their name from a pull-down menu. If this is your configuration, do steps number 5 and 6 and then skip to step number 11 when completed. However, if you switched the application to use Windows NT Authentication (by following the instructions in the document *Windows Authentication for GTGS Technical Note*), then skip steps number 5 and 6 and continue with step number 7.

Yes No 5. (DB only) Click on the [GeneChip Targeted Genotyping Analysis Software](#) link in the GeneChip TG Software web page. Does a pull-down menu appear asking for users to select their name?

Note: Another dialog may appear the first time the application is launched, asking whether to integrate the application into the desktop. If it does, select **No** in the dialog.

Yes No 6. (DB only) Select the user **admin** and click **OK**. Does the application finish starting up without any error messages?

Yes No 7. (NT only) Navigate to Start Menu > right-click on My Computer > Manage. Then navigate to System Tools > Local Users and Groups > Groups. Does a local users group named “GTGSusers” exist on the Post-Amp Workstation?



- Yes No 8. (NT only) Double-click on GTGSusers local user group. Does it contain the domain users that will use GTGS?
- Yes No 9. (NT only) Log out of Windows, and log in as an authorized NT user in the "GTGSusers" group. Click on the [GeneChip Targeted Genotyping Analysis Software](#) link in the GeneChip TG Software web page.

Note: If a security warning appears, click **Start** to continue launching the application. If the application is running with a Trial license, click **No** when asked to enter the permanent license and click **Accept** in the End User License Agreement.

Does main application window appear?

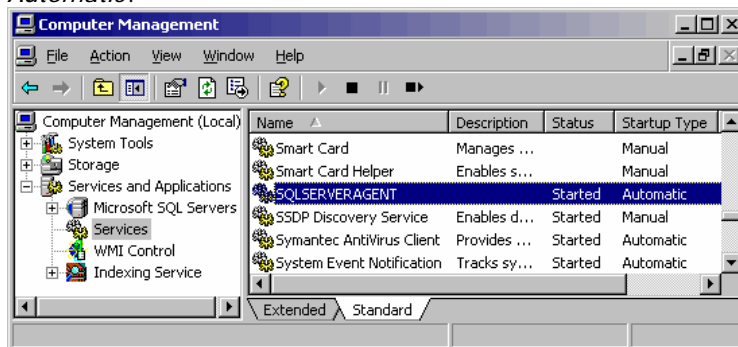
- Yes No 10. (NT only) Log out of Windows, and log in as an NT user who is NOT a member of "GTGSusers". Launch GeneChip Targeted Genotyping Analysis Software. Does the following error message appear?:  
**"java.sql.SQLException: [DataDirect][SQLServer JDBC Driver]Login failed for user '<username>'. Exception"**

Dismiss this message, and then log out of Windows. Log in as an authorized NT user in the "GTGSusers" group.

- Yes No 11. Verify that an authorized user can write to the shared AGCC data folder: From the Windows desktop, open any folder window, and type the following into the address bar (using the actual AGCC computer name and shared folder):  
*\\AGCC\_Computer\_Name\some shared AGCC data root subfolder*

Press return. Try to save a new text document in this folder. Can you write to this folder without any error messages?

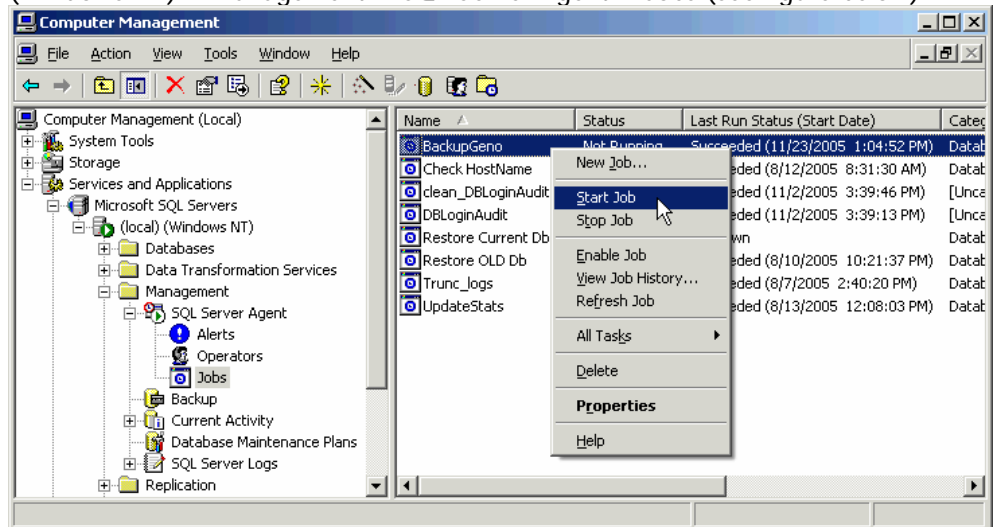
- Yes No 12. Log into the Post-Amp Workstation as a user with local administrator privileges (like "Administrator"). Navigate to Start Menu > right-click on My Computer > Manage. Using the screenshot below as a guide, navigate to Services and Applications > Services > SQLSERVERAGENT service. Is the Status *Started*, and the Startup Type *Automatic*?



**Keep this window open**

Yes No 13.

(For GTGS 1.5 -> 1.6 upgrades only) Still within the Computer Management window, navigate to Services and Applications > Microsoft SQL Servers > (local) (Windows NT) > Management > SQL Server Agent > Jobs (see figure below):

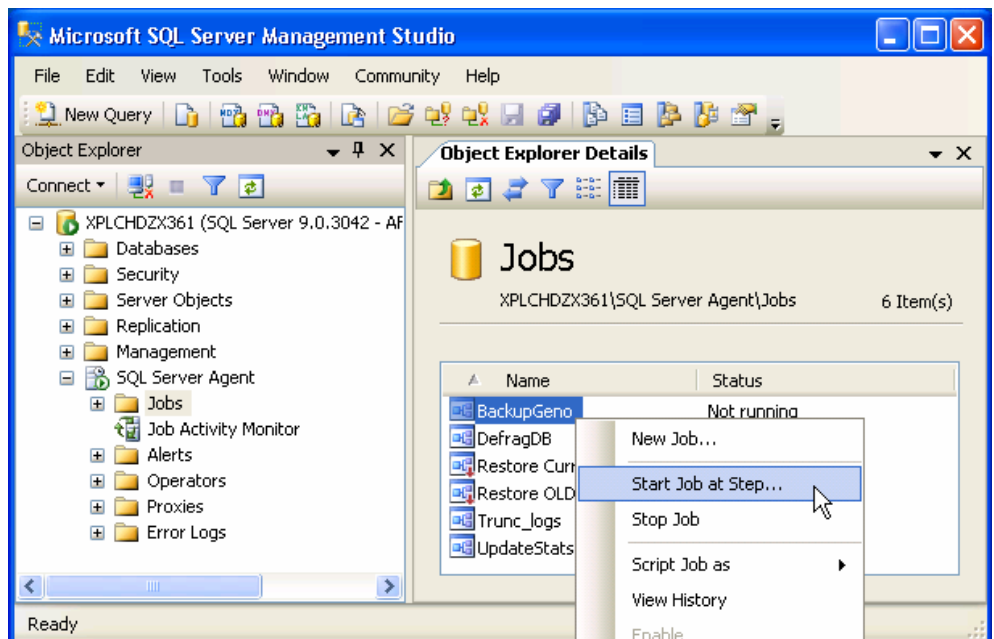


Right-click on the **BackupGeno** job, and select **Start Job**. When the job starts, refresh the window by right-clicking on the window containing this job and selecting **Refresh**. When the Status for **BackupGeno** is "Not Running," does the Last Run Status report "Succeeded"?

### Close the Computer Management window

Yes No 14.

(For new GTGS 1.6 systems only) From the Start Menu, navigate to Programs > Microsoft SQL Server 2005 > SQL Server Management Studio. In the left pane, expand the local database > SQL Server Agent, and select Jobs (see figure below):



Right-click on the **BackupGeno** job, and select **Start Job at Step... (1)**. After both steps complete, is the status of both "Success"?

### Close Microsoft SQL Server Management Studio

- Yes No 15. Open Microsoft Notepad on the Post-Amp Workstation, and scan in an array barcode, or any other barcode that's available. Is the cursor blinking *on the next line, right below the barcode?*

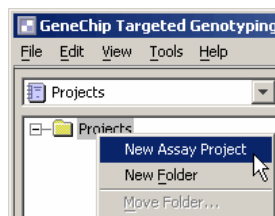
### **Pre-Amp Lab Workstation Verification**

- Yes No 16. Log into Windows as a domain user who should have access to GTGS. Is there a "GeneChip TG Software" Internet Explorer shortcut on the Desktop?
- Yes No 17. Double-click on the GeneChip TG Software shortcut. Does a web page with the Affymetrix® logo open having?
- Yes No 18. Double-click on the [GeneChip Targeted Genotyping Analysis Software](#) link in the GeneChip TG Software web page.

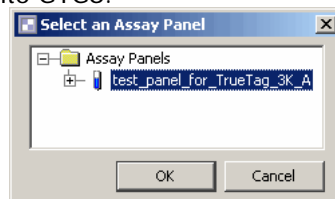
Note: If a security warning appears, click **Start** to continue launching the application. If the application is running with a Trial license, click **No** when asked to enter the permanent license and click **Accept** in the End User License Agreement.

Does the application load directly to the main window?

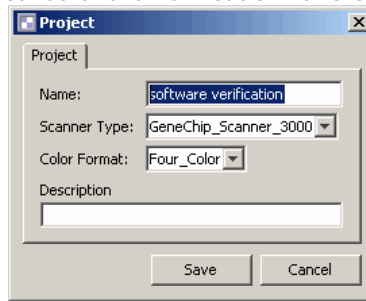
- Yes No 19. Within the application, select the Projects item in the pull-down menu below the File menu. Right-click on the Projects folder in the tree and select **New Assay Project**.



Select a test assay panel and click **OK**. If you don't have one, you can download a catalog assay panel from <http://www.affymetrix.com/support/technical/assaypanelfilesmain.affx>. Note that if you download a 3K assay panel file, you'll also need to have the 3K array definition already loaded into GTGS.



Name the project "software verification" and click **Save**.



Expand the software verification project, and right-click on the Tracking section. See if the "Create Sample Files for AGCC" operation option is enabled

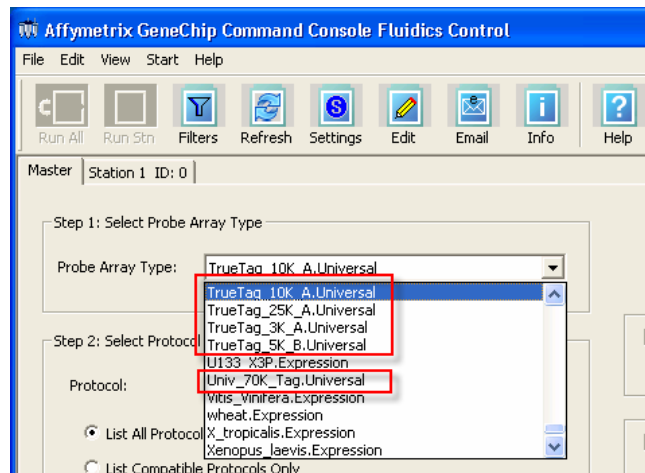


Is this operation enabled? (if not, the "GCOS.properties" file on the Post-Amp Workstation is still configured to communicate with GCOS, not AGCC. If this is not the intent, refer to the software user guide on how to change this configuration (AGCC/GCOS compatibility modes).

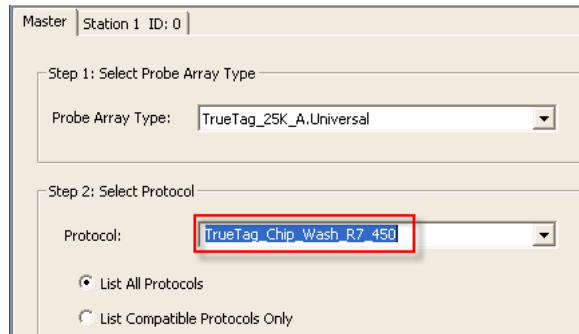
Yes No 20. Open Notepad on the Pre-Amp Workstation, and scan in an array barcode, or any barcode that's available. Is the cursor blinking *on the next line, right below the barcode?*

### AGCC Instrument Control Workstation Verification for GTGS

Yes No 21. From the AGCC Instrument Workstation, launch AGCC Fluidics Control from Desktop > Affymetrix Launcher. In the Probe Array Type selector (see below), can you find the array type you need for your assay panel (the Probe Array Type will begin with TrueTag or Univ). Among the array types highlighted below, only the ones you will use need to be present.



Yes No 22. In the same application, is the TrueTag wash protocol available (see below)?



The screenshot shows a software interface with a title bar that reads "Master Station 1 ID: 0". Below the title bar, there are two main sections. The first section is titled "Step 1: Select Probe Array Type" and contains a dropdown menu labeled "Probe Array Type:" with the value "TrueTag\_25K\_A.Universal" selected. The second section is titled "Step 2: Select Protocol" and contains a dropdown menu labeled "Protocol:" with the value "TrueTag\_Chip\_Wash\_R7\_450" selected. This dropdown menu is highlighted with a red rectangular box. Below the "Step 2" section, there are two radio button options: "List All Protocols" (which is selected) and "List Compatible Protocols Only".

Yes No 23. If you intend to use the TrueTag\_10K\_A array or the Univ\_70K\_Tag array, does selecting either of them auto-populate a protocol? If not, download an updated set of fluidics scripts from the Affymetrix website directly ([http://www.affymetrix.com/support/technical/fluidics\\_scripts.affx](http://www.affymetrix.com/support/technical/fluidics_scripts.affx)) or indirectly using the Fluidics Scripts Installer.